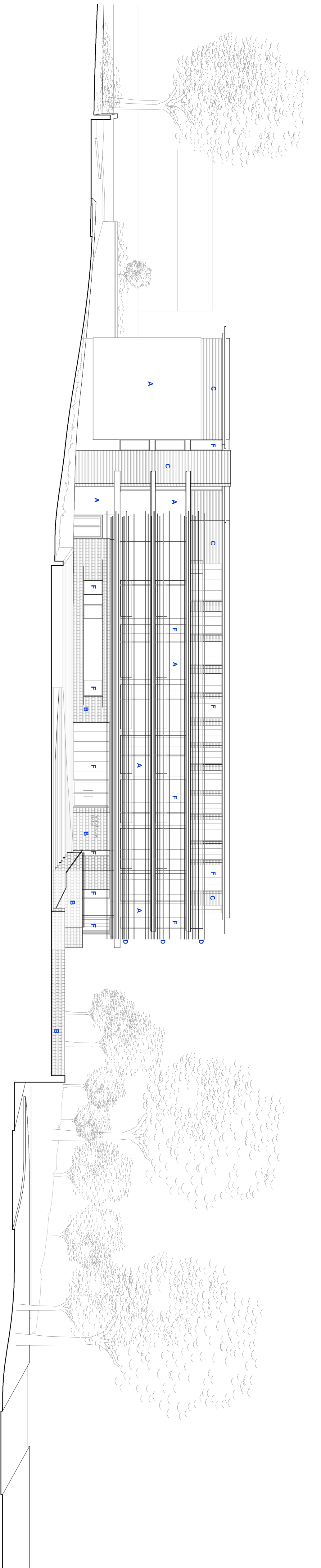
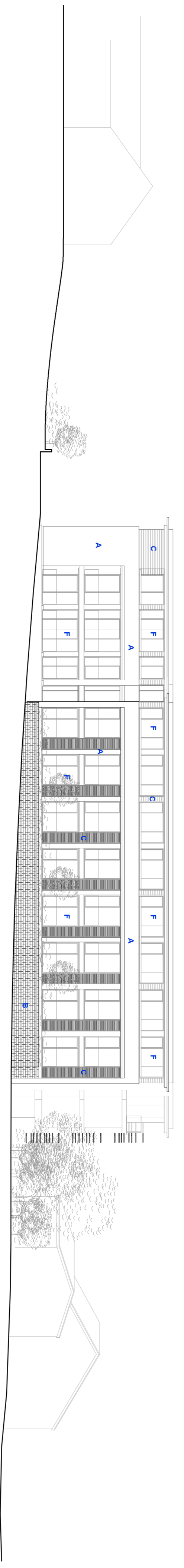


(ROOF)	+38.32	_____
(APARTMENTS)	+35.00	_____
(HOTEL ROOMS)	+32.00	_____
(HOTEL ROOMS)	+29.00	_____
(HOTEL ENTRANCE)	+25.00	_____
(HOTEL ENTRANCE)	+21.00	_____



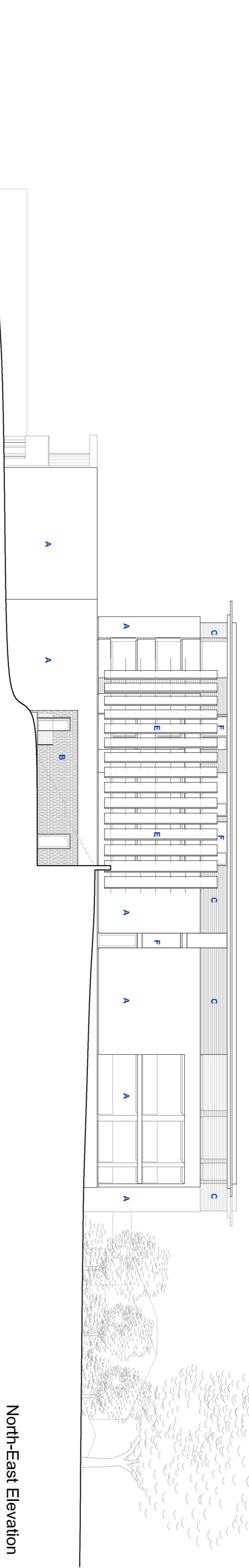
South-East Elevation

(ROOF)	+38.32	_____
(APARTMENTS)	+35.00	_____
(HOTEL ROOMS)	+32.00	_____
(HOTEL ROOMS)	+29.00	_____
(HOTEL ENTRANCE)	+25.00	_____
(HOTEL ENTRANCE)	+21.00	_____



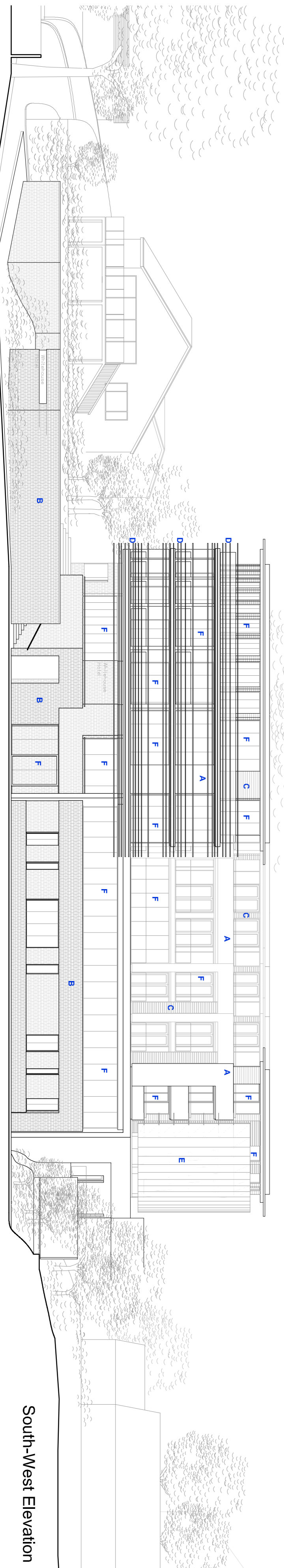
North-West Elevation

(ROOF)	+38.32	_____
(APARTMENTS)	+35.00	_____
(HOTEL ROOMS)	+32.00	_____
(HOTEL ROOMS)	+29.00	_____
(HOTEL ENTRANCE)	+25.00	_____
(HOTEL ENTRANCE)	+21.00	_____



North-East Elevation

(ROOF)	+38.32	_____
(APARTMENTS)	+35.00	_____
(HOTEL ROOMS)	+32.00	_____
(HOTEL ROOMS)	+29.00	_____
(HOTEL ENTRANCE)	+25.00	_____
(HOTEL ENTRANCE)	+21.00	_____



South-West Elevation

MATERIAL KEY

A	RENDER
B	STONE
C	TIMBER CLADDING
D	HORIZONTAL TIMBER SLATS
E	VERTICAL TIMBER SLATS
F	GLASS

revision	date	drawn	description
A	17.05.12	MP	Revised billine with reduced/damened scheme
B	22.05.12	MP	Minor revisions
C	30.07.12	MP	General Amendments

Broomco (3857) Ltd
White House Hotel
PROPOSED ELEVATIONS
08.06.11 LK 1:200 @ A1
10061 (PI) 210 C